

F215 Mk2

The F215 Mk2 offers particularly well defined mid bass from a compact enclosure; bringing new power, clarity and output to an important yet often neglected area of the frequency spectrum.

Utilising similar bass loading technology to Funktion One's highly regarded F218, with Funktion One high performance drivers and an overall tuning for strong and accurate impact, the F215 delivers outstanding upper bass performance. It can be used as a main stand alone bass enclosure for smaller systems or combined with other Funktion One bass enclosures to form the beating heart of larger systems.

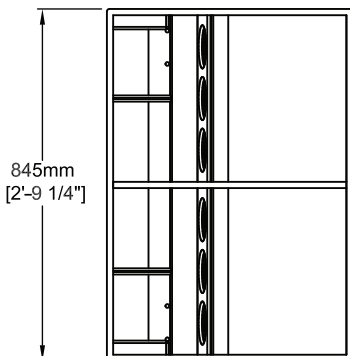
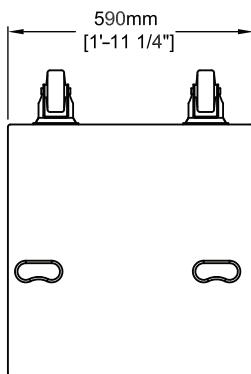
The vertically stacked arrangement of the two horns, birch ply construction and optional robust wheels make for a durable, convenient and high performance package.



Features:

- Fully horn loaded for high efficiency
- Advanced loudspeaker driver design
- Integral Handles
- Optional Wheels
- Optional threaded pole mount

Driver	Sensitivity (1W at 1m)	Power (rms)	Nominal Impedance
2x15"	105dB	800W <i>AES rated</i>	2 x 8Ω 4Ω Total



Frequency Response $\pm 3\text{dB}$:

60Hz - 250Hz

Weight:

63kg (139lbs)

Construction:

15mm Birch Ply

Connectors:

2 x Speakon NL4

(One driver wired pins 1+/- and one on 2+/-)

